

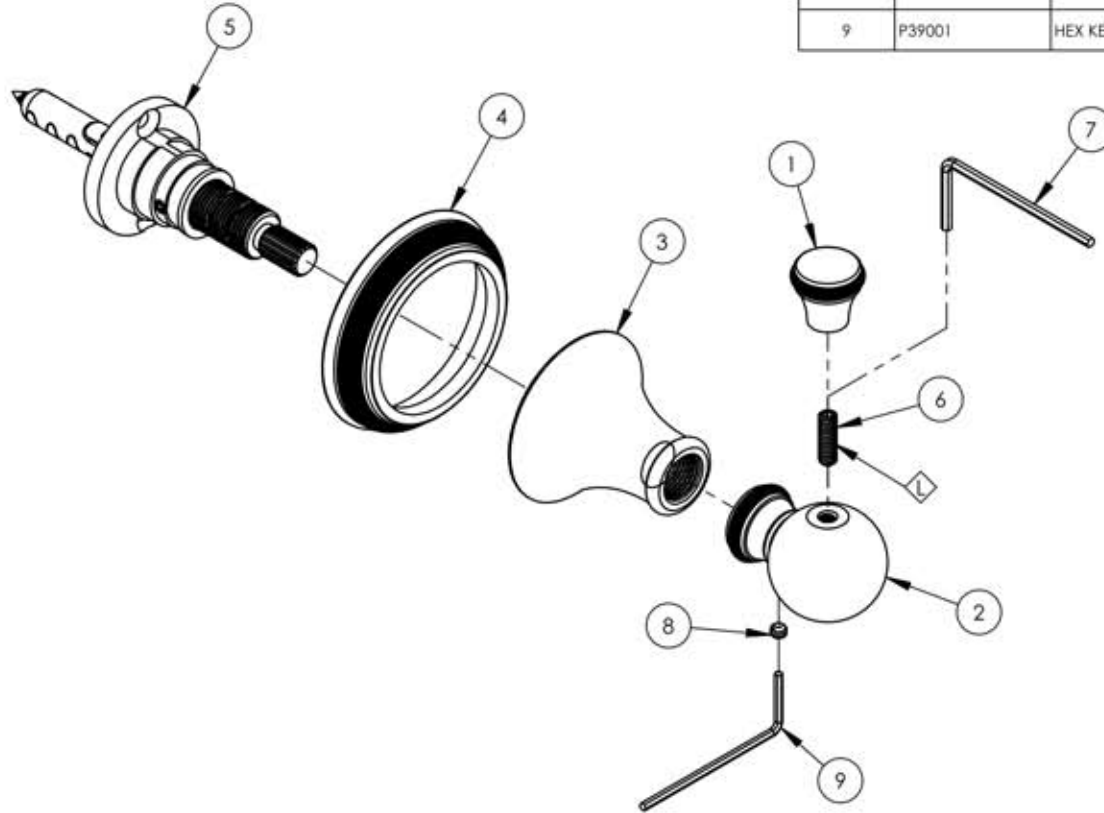
NOTE(S):

1. ALL DIMENSIONS SHOWN ARE FOR REFERENCE ONLY

2. APPLY NSF COMPLAINT GREASE TO ANY O-RING AND/OR SEALING JOINTS. G

3. APPLY NSF COMPLAINT LOCTITE TO THREADED AREA. L

ITEM NO.	PART NUMBER	DESCRIPTION	QTY.
1	10525/00	ROBE HOOK FINIAL, 208 SERIES	1
2	10527/00	ROBE HOOK POST, 208 SERIES	1
3	10972/00	HUB, TRANSITIONAL 3RING	1
4	10978/00	ESCUTCHEON HANDLE BASE COINED, 3RING, COINED SERIES	1
5	2-104	MOUNTING KIT WITH BROACH	1
6	92152	SET SCREW, CUP PT. 10-24 UNC X 5/8"L	1
7	92184	HEX L-KEY 3/32" HEX x 2 1/8"L	1
8	92248	SET CREW, CUP POINT 8-32 UNC. 1/8" L.	1
9	P39001	HEX KEY 5/64, FOR 8-32 SET SCREW	1



ZONE	REV.	DESCRIPTION	DATE	APPROVED
REVISIONS				

1261 LOGAN AVENUE COSTA MESA, CALIFORNIA 92626 PHONE: 714.361.4800 FAX: 714.617.3120	<h1 style="margin: 0;">PHYLORICH®</h1> <p style="margin: 0;">Defining Luxury Since 1959</p>	<p>PROPRIETARY AND CONFIDENTIAL</p> <p><small>THE INFORMATION CONTAINED IN THIS DRAWING IS THE SOLE PROPERTY OF R3S MANUFACTURING. ANY REPRODUCTION IN PART OR AS A WHOLE WITHOUT THE WRITTEN PERMISSION OF R3S MANUFACTURING IS PROHIBITED.</small></p>
---	---	---

NEXT ASSY	USED ON	INTERPRET GEOMETRIC DIMENSIONING & TOLERANCING IN ACCORDANCE WITH ASME Y14.5-2009 & ASME Y14.41-2003 STANDARDS. UNLESS OTHERWISE SPECIFIED, DIMENSIONS ARE IN INCHES. TOLERANCES ARE:		
MATERIAL	APPLICATION	FRACTIONS ±1/64"	DECIMALS X.X: ±.1 X.XX: ±.01 X.XXX: ±.005	ANGULAR ±.5°
FINISH	DRAWN	NAME	DATE	
	CHECKED	GRE	9/24/2015	

ROBE HOOK, COINED SERIES			
SIZE	ASM/PRT NO.	REV	
A	208-76/00	-	
SCALE: 1:2	WEIGHT: lbs.	SHEET 1 OF 2	

5

4

3

2

1